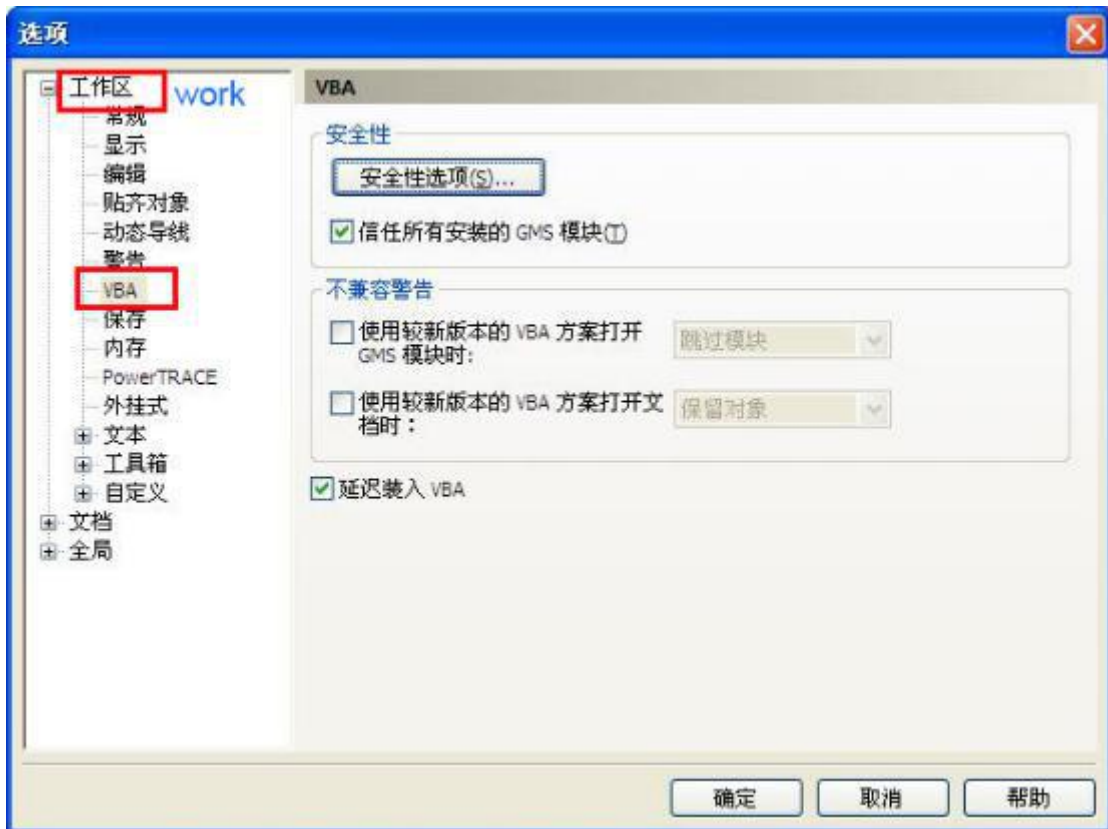
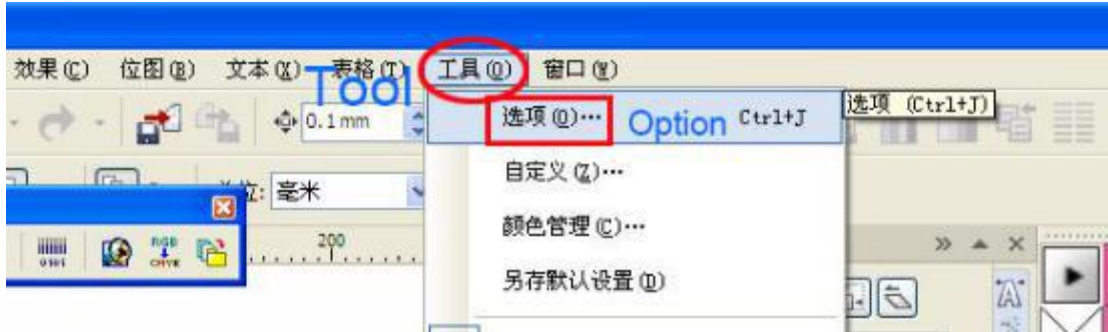
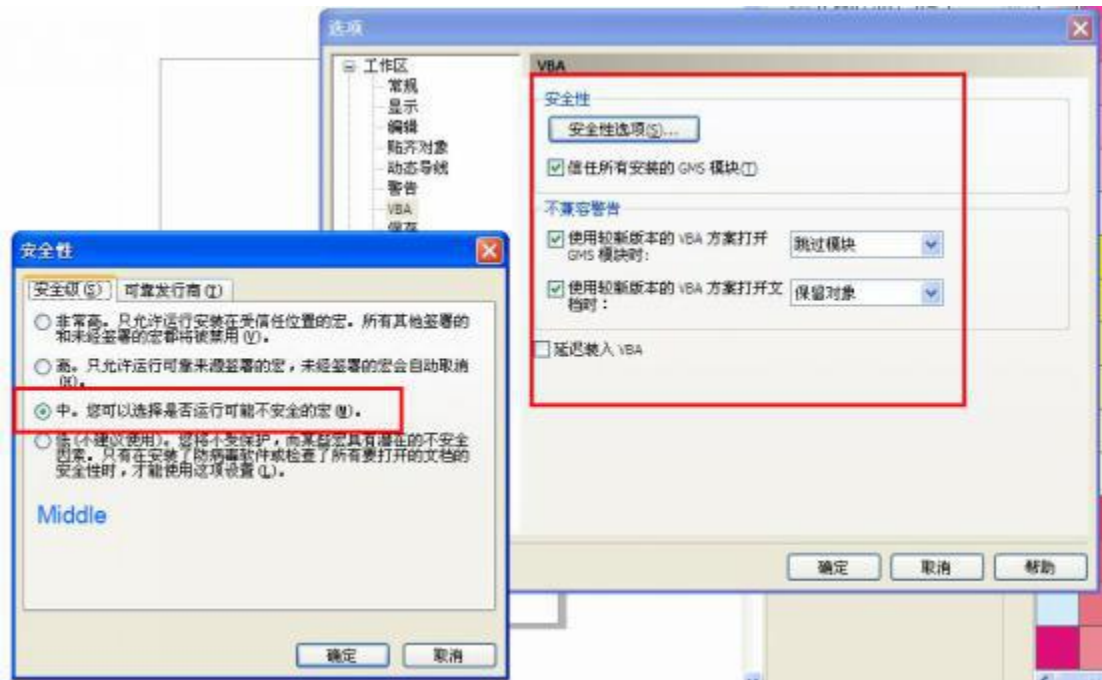


一， How to output graphic made in CorelDraw?

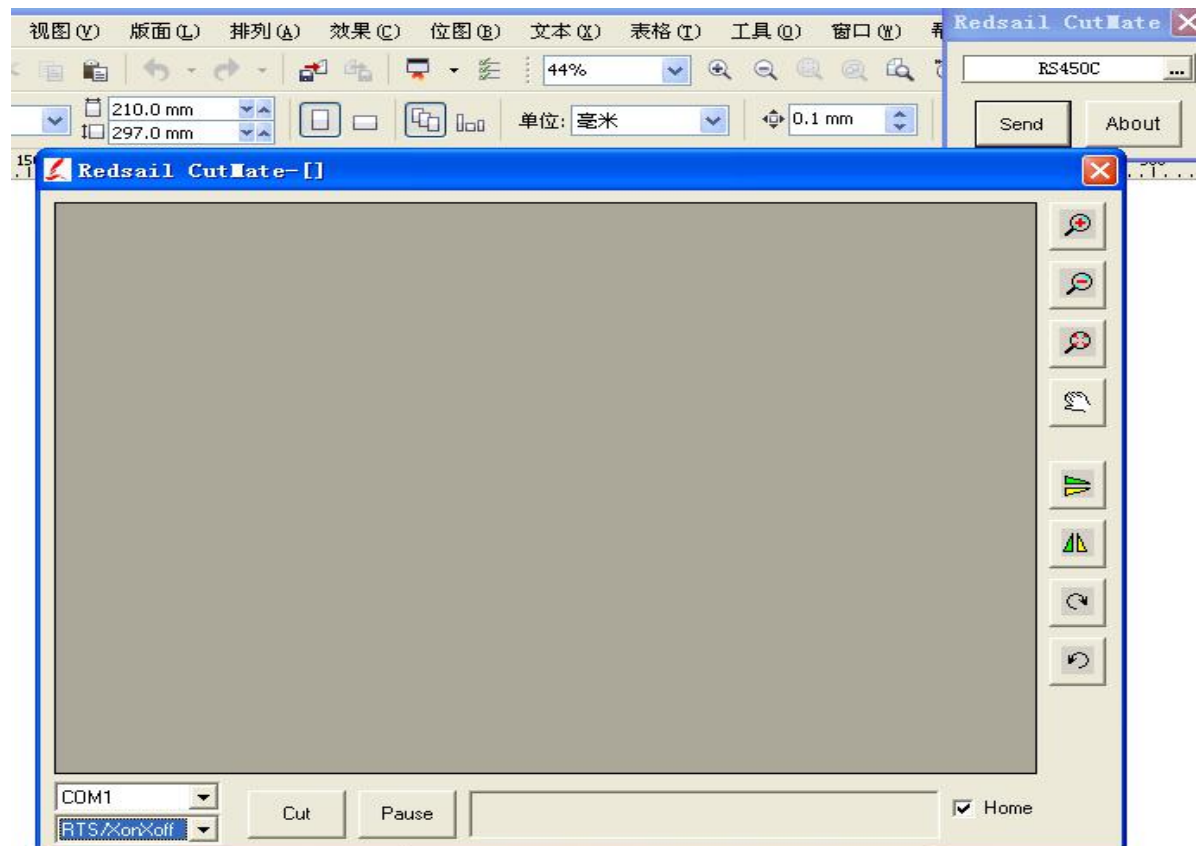
1, If you have cutmate, please install this driver.(Note:Before install cutmate driver, please set coreldraw parameter as below.) When you install cutmate driver, the position installing should be in file as "coreldraw-draw-GMS".



Change setting like follows



Click "Yes".



2, If you don't have cutmate, you can preserve file into "PLT" format. Then import graphic into Artcut or other software you use , set parameter well, then you can output it.